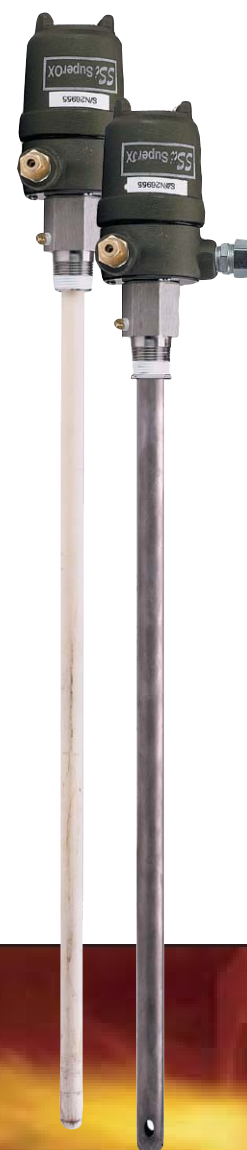
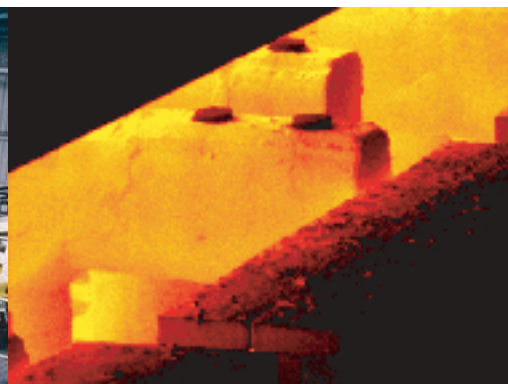


# INNOVATIVE SOLUTIONS WORLD WIDE

SSi

## THE ROAD TO QUALITY



### SuperOX Applications

- Direct-fired furnaces (Reheat, annealing, tunnel)
- Glass Furnaces (Side-fired, End-fired, Float, Container, and Fiberglass)
- Utility boilers (Gas-fired and coal-fired)
- Ceramic kilns, Brick kilns
- Petrochemical - Air Quality after-burners

### SuperOX Specifications

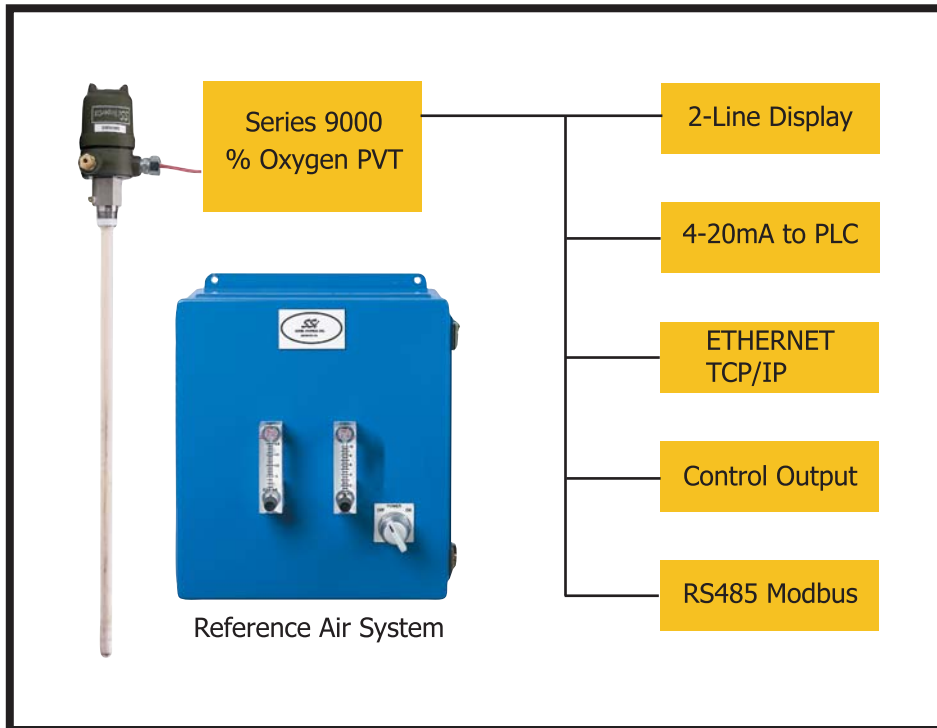
- Process variable range: 20.9% to  $8.77 \times 10^{-31}$
- Temperature range: 1200°- 3000° F (650°- 1650°C)
- Sensor impedance: Less than 10 k ohms @ 1700°F
- Sensor output: 0 to 1250 mVDC
- Response time: Less than 1 second
- Sheath material: 99% Alumina or Silicon Carbide



# INNOVATIVE SOLUTIONS WORLD WIDE



## COMBUSTION EFFICIENCY SOLUTIONS



TAKE CONTROL WITH



9000 PVT & Controller

Description	Sheath Material	Insertion Length	Part Number
SuperOX – "B" T/C	Alumina	18"	18272 00
SuperOX – "B" T/C	Silicon Carbide	18"	18372 00
SuperOX – "B" T/C	Alumina	26"	18252 00
SuperOX – "B" T/C	Silicon Carbide	26"	18352 00
SuperOX – "B" T/C	Alumina	30"	18282 00
SuperOX – "B" T/C	Silicon Carbide	30"	18382 00
SuperOX – "B" T/C	Alumina	36"	18262 00
SuperOX – "B" T/C	Silicon Carbide	36"	18362 00
9000 PVT & Controller			13336
24 Vdc Power Supply			31135
Digital Display			31286
Ref Air / Cooling Air	Single Zone		13017
Ref Air / Cooling Air	Dual Zone		13368

### SUPER SYSTEMS INC

7205 Edington Drive  
Cincinnati, Ohio 45249  
513-72-0060, Fax: 513-772-9466

[www.supersystems.com](http://www.supersystems.com)